



# TASTE GAMI TASTE BARGAIN



## BIBIMBAP \$16.0 2740KJ

A healthy and delicious Korean rice dish showcasing flavourful vegetables, your preferred protein and a choice of sauce. Topped with a fried egg.

Choice of protein: Beef | Spicy Chicken  | Kimchi   
Choice of sauce: Spicy Sauce  | Soy Sauce



## GOCHUJANG CHICKEN \$13.5 3050KJ

Pan-fried maryland fillet coated in sweet & spicy Gochujang sauce, served with crushed garlic sauce, rice and green salad.



## CRISPY CHICKEN STEAK \$13.5 2900KJ

A crispy maryland steak topped with Gami-made tartar sauce served with green salad and mashed potato salad.



## DRUMSTICKS & CHIPS \$12.5 4180KJ

3 pcs chicken drumsticks in Gami's golden recipe with Gami chips served with a choice of dipping sauce on the side.



## CHICKEN BURGER LIGHT \$9.9 2290KJ

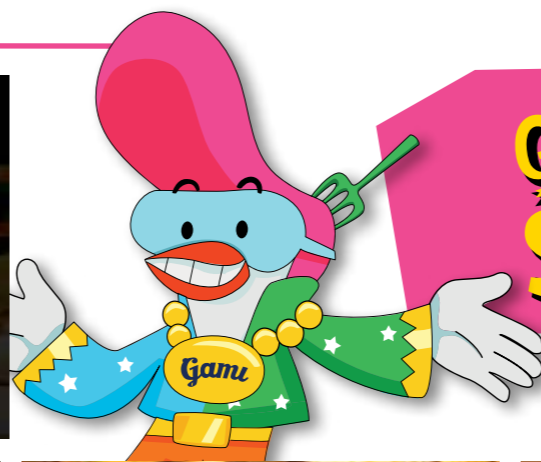
Lighter crisped chicken thigh fillet layered with apple coleslaw and Gami cheese sauce on a toasted bun.



## KATSU BURGER LIGHT \$9.9 3350KJ

Lighter crumbed chicken cutlet layered with apple coleslaw and Gami katsu sauce on a toasted bun.

\*Terms and conditions: Product not to be purchased in conjunction with any other discount offer.



# GAMI SIGNATURE

TO SHARE



## BIG CHICKEN

👑 69.0 15467KJ  
1.2kg massive amount of boneless chicken with Gami cheese sticks, crispy rice cakes and seasoned thin shoestring chips served with 4 dipping sauces

For every Big Chicken sold, \$4 will be donated to Starlight Children's Foundation  
www.starlight.org.au




★ **Unmissable Chicken 52.0**  
9360KJ  
Enjoy all of Gami's best-selling chicken flavours in one dish with our Unmissable Chicken. Crispy Original, luscious Sweet Chilli, unique Galbi Chicken and spicy Gochu Mayo with Sweet Mustard dipping sauce. Don't miss out on this delicious chicken feast!



★ **Pane Rose Chicken 50.0**  
10200KJ  
Savour the rich and creamy flavours of our Pane Rose Chicken - Crispy boneless chicken topped with our exquisite rose sauce, made with a blend of tomato sauce, cream, onion, and mushroom served around a toasted pane bread bowl filled with melted corn flavour cheese.



★ **Galbi Chicken Ssam 49.0**  
12400KJ  
Crispy boneless chicken is coated in a savoury Galbi sauce with a Gami twist, and served with fresh spring onions. Enjoy a traditional "Ssam" experience by wrapping the chicken in lettuce and pita bread with Kimchi salsa, hummus, and crushed garlic.

Extra Lettuce and Pita Bread +5.0 1110KJ  
Extra Sauce +2.5  
( Kimchi Salsa 95KJ | Hummus 580KJ | Crushed Garlic 525KJ )



👑 **Chicken Corndue 45.0**  
9360KJ  
Corn based cheese fondue centred and surrounded by 8 pieces of boxing chicken and 8 pieces of wings. Served with 2 choices of dipping sauces

Dipping Sauces: Sweet Chilli | Soy Garlic  
Spicy 🌶️ | Sweet Mustard

Extra Corndue +6.0 1760KJ  
Extra Boxing Chicken 8pcs +15.0 3130KJ  
Extra 8pcs Gami Wings +13.0 3330KJ



★ **The Classic Boneless 42.0**  
7438 kJ  
Gami's most popular menu item is back, The Classic Boneless Chicken! Served with your 2 favourite Gami flavours as a coating OR dipping sauce



★ **Whole Chicken 40.0**  
9494KJ  
A whole chicken cut into 17 pieces (with bones) served with your 2 favourite Gami flavours as a coating OR dipping sauce

**Flavours:**  
Original | Sweet Chilli | Soy Garlic | Spicy 🌶️  
**Drizzled:**  
Sweet Mustard | Red Spicy Mayo 🌶️ | White Spicy Mayo 🌶️

## APPETIZERS TO START

- 👑 **Gami Prawn Mandu 14.5** 1600KJ  
Premium hand-made mandu (5 pcs) filled with real chunky prawn meats wrapped up in crusty thin skin
  - Gami Japchae Mandu 12.5** 1820KJ 🌿  
Premium hand-made mandu (4pcs) filled with stir-fried vegetables and sweet potato noodles seasoned with sweet soy sauce, wrapped up in crispy skin and drizzled with chef's sweet and spicy sauce.
  - ★ **Gami Cheese Sticks 12.5** 2175KJ 🌿  
Deep-fried mozzarella cheese sticks (6 pcs) covered with herbed bread crumbs served with sweet chilli sauce
  - Garden Salad 9.5** 840KJ 🌿  
Fresh garden salad, apple, tomato and beetroot with choice of dressing
- Choose your dressing:  
Apple | Balsamic Dressing



## FOR ONE BONELESS CHICKEN

★ **BONELESS CHICKEN**  
\*Choose one flavour, coated or served on the side  
**LARGE 29.0** 5320KJ    **REGULAR 21.0** 3720KJ

## GAMI WINGS

\*Choose one flavour, coated or served on the side  
**16pcs 25.0** 6660KJ    **10pcs 17.0** 4160KJ

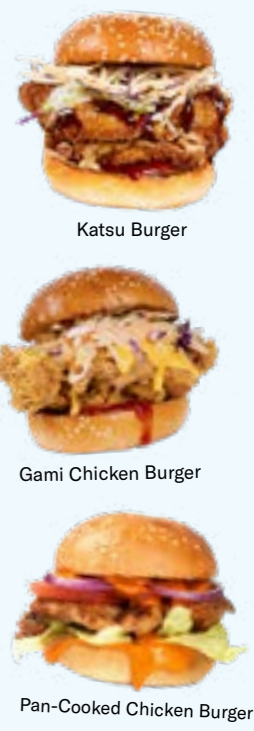
**ADD-ON +**  
Pickled Radish 3.0 289KJ | Coleslaw 4.0 1020KJ | Green Salad 4.0 224KJ

**EXTRA DIPPING SAUCE 2.5**  
Sweet Chilli 224KJ | Soy Garlic 506KJ | Spicy 419KJ 🌶️ | Sweet Mustard 917KJ  
White Spicy Mayo 1186KJ 🌶️ | Red Spicy Mayo 979KJ 🌶️

## BURGERS

\*All burgers served with Gami chips on the side.

- ★ **Katsu Burger 21.0** 6666KJ  
Crumbed chicken double stacked cutlet layered with coleslaw, Gami katsu sauce and cheese sauce on a toasted bun
- Gami Chicken Burger 19.5** 6888KJ  
Wholly crisped chicken thigh fillet layered with coleslaw and Gami cheese sauce on a toasted bun
- ★ **Pan-Cooked Chicken Burger 19.5** 4440KJ 🌶️  
Juicy chicken is cooked to perfection in a pan, then layered with fresh lettuce, tomato and Spanish onion with a spicy mayo sauce on a toasted bun.



# GAMI DELIGHTS

## Chicken Katsu 17.5 4780KJ

Crumbed chicken cutlet served with Gami katsu sauce, chips and green salad with apple dressing

## ★ Potato Heaven 16.5 6825KJ

Signature potato dish with layers of creamy mashed potato, mozzarella cheese, and wedges, topped with sweet chilli sauce, tomato sauce and sour cream

## Seafood Pancake 16.0 2972KJ

Crispy pan-fried pancake with assorted seafood and spring onion in savoury Korean batter served with chilli soy sauce

## 👑 Kimchi Pancake 16.0 2541KJ

Crispy pan-fried pancake with kimchi in savoury Korean batter served with chilli soy sauce

## ★ Tteok bokki 14.5 3354KJ

Add mozzarella cheese on top +2.0

Stir-fried rice cakes, fish cakes, mixed vegetables and noodles in Korean gourmet chilli sauce

## Kimchi Fried Rice 13.5 3053KJ

Topped with fried egg +2.0

Stir-fried rice with diced chicken thigh fillet, kimchi, mixed vegetables in chef's special spicy sauce, served with green salad

## Spicy Chicken Fried Rice 13.5 3883KJ

Topped with fried egg +2.0

Stir-fried rice with diced chicken thigh fillets, mixed vegetables in chef's special spicy sauce, served with green salad

## Dumplings 13.5 2190KJ

Deep fried Korean dumplings (10 pcs) filled with mixed vegetables served with coleslaw and chilli soy sauce

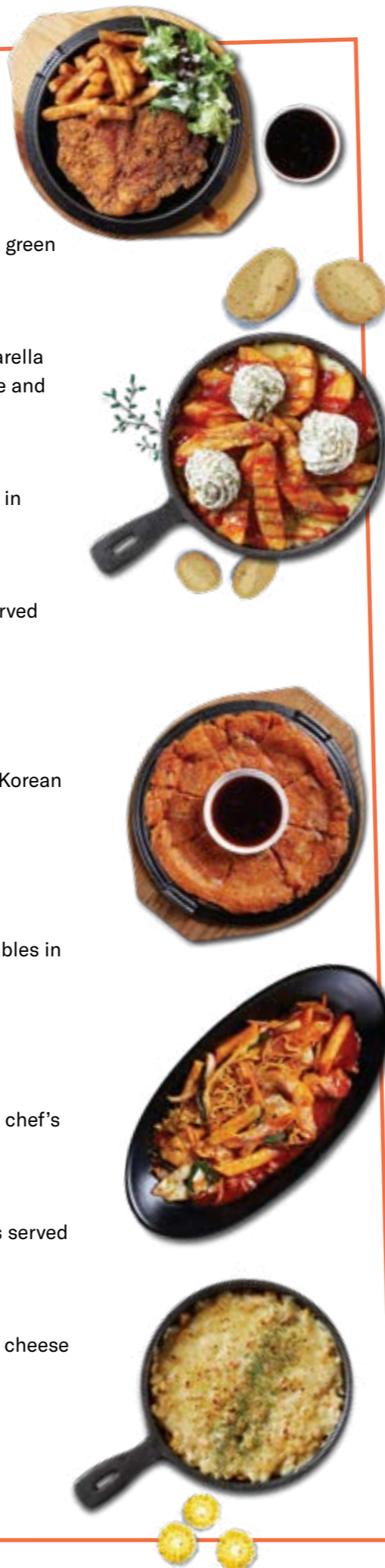
## ★ Corn Cheese 11.0 2884KJ

Baked creamy sweet corn kernels covered with melted mozzarella cheese

## Gami Chips 6.9 3042KJ

Locally grown cut potato strips coated in Gami signature batter

## Steamed Rice 2.5 1270KJ



# PERTH CBD SPECIALS

## Spicy Stir Fry Chicken 18.0 5348KJ

Add mozzarella cheese on top +2.0

Stir-fried chicken fillets and vegetables in chef's special spicy sauce served on a sizzling plate with a side of steamed rice

## 👑 Beef Bulgogi 17.5 4440KJ

Stir-fried marinated thinly sliced beef and vegetables with sweet potato noodles in sweet soy sauce, served with rice and green salad

## ★ Japchae 15.5 4183KJ

Vegetarian option available

Sweet potato noodles stir-fried with chicken, mushrooms and vegetables in sweet soy sauce

Spicy Stir Fry Chicken



## Chicken Salad 13.5 2270 kJ

Juicy pan-cooked Maryland chicken cutlet on top of fresh garden salad, including a mix of greens, apple, tomato and beetroot.

Choose your dressing:

Apple | Balsamic Dressing

## Fried Rice Cake 6.0 813KJ

Deep fried rice cakes coated with Gami's sweet chilli sauce



Beef Bulgogi



Japchae

# KID'S MENU

## Chicken Slider 9.8 2060KJ

Crispy chicken thigh fillet with tomato sauce and mayonnaise on a toasted slider bun with small chips

## Chicken Nuggets 9.8 2971KJ

Chicken nuggets (5 pcs) served with small chips and PopTop juice



# GAMI DESSERTS TO FINISH

## ★ Hotteok 8.5 2742KJ

Korean street style sweets. Glutinous pancake filled with creamy melted black sugar and various nuts, sprinkled with crushed peanuts

## 👑 Gami K-Donut 7.9 1122KJ

Glutinous donuts filled with sweet red bean paste drizzled with caramel syrup and condensed milk, sprinkled with crushed peanuts

