



TASTE GAMI TASTE BARGAIN



BIBIMBAP \$16.0 2740KJ

A healthy and delicious Korean rice dish showcasing flavourful vegetables, your preferred protein and a choice of sauce. Topped with a fried egg.

Choice of protein: Beef | Spicy Chicken | Kimchi
Choice of sauce: Spicy Sauce | Soy Sauce



GOCHUJANG CHICKEN \$13.5 3050KJ

Pan-fried maryland fillet coated in sweet & spicy Gochujang sauce, served with crushed garlic sauce, rice and green salad.



CRISPY CHICKEN STEAK \$13.5 2900KJ

A crispy maryland steak topped with Gami-made tartar sauce served with green salad and mashed potato salad.



DRUMSTICKS & CHIPS \$12.5 4180KJ

3 pcs chicken drumsticks in Gami's golden recipe with Gami chips served with a choice of dipping sauce on the side.



CHICKEN BURGER LIGHT \$9.9 2290KJ

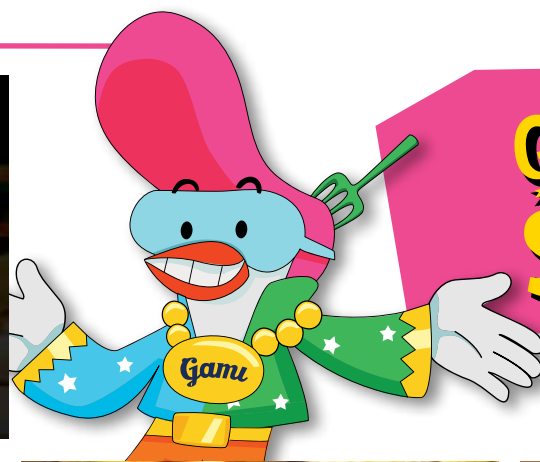
Lighter crisped chicken thigh fillet layered with apple coleslaw and Gami cheese sauce on a toasted bun.



KATSU BURGER LIGHT \$9.9 3350KJ

Lighter crumbed chicken cutlet layered with apple coleslaw and Gami katsu sauce on a toasted bun.

*Terms and conditions: Product not to be purchased in conjunction with any other discount offer.



GAMI SIGNATURE

TO SHARE



BIG CHICKEN

👑 69.0 15467KJ
1.2kg massive amount of boneless chicken with Gami cheese sticks, crispy rice cakes and seasoned thin shoestring chips served with 4 dipping sauces

For every Big Chicken sold, \$4 will be donated to Starlight Children's Foundation www.starlight.org.au




★ **Unmissable Chicken 52.0**
9360KJ
Enjoy all of Gami's best-selling chicken flavours in one dish with our Unmissable Chicken. Crispy Original, luscious Sweet Chilli, unique Galbi Chicken and spicy Gochu Mayo with Sweet Mustard dipping sauce. Don't miss out on this delicious chicken feast!



NEW
Pane Rose Chicken 50.0
10200KJ
Savour the rich and creamy flavours of our Pane Rose Chicken - Crispy boneless chicken topped with our exquisite rose sauce, made with a blend of tomato sauce, cream, onion, and mushroom served around a toasted pane bread bowl filled with melted corn flavour cheese.

DINE IN ONLY!



Galbi Chicken Ssam 49.0
12400KJ
Crispy boneless chicken is coated in a savoury Galbi sauce with a Gami twist, and served with fresh spring onions. Enjoy a traditional "Ssam" experience by wrapping the chicken in lettuce and pita bread with Kimchi salsa, hummus, and crushed garlic.

Extra Lettuce and Pita Bread +5.0 1110KJ
Extra Sauce +2.5
(Kimchi Salsa 95KJ | Hummus 580KJ | Crushed Garlic 525KJ)



👑 **Chicken Corndue 45.0**
9360KJ
Corn based cheese fondue centred and surrounded by 8 pieces of boxing chicken and 8 pieces of wings. Served with 2 choices of dipping sauces

DINE IN ONLY!

Dipping Sauces: Sweet Chilli | Soy Garlic
Spicy 🌶️ | Sweet Mustard

Extra Corndue +6.0 1760KJ
Extra Boxing Chicken 8pcs +15.0 3130KJ
Extra 8pcs Gami Wings +13.0 3330KJ



★ **The Classic Boneless 42.0**
7438 kJ
Gami's most popular menu item is back, The Classic Boneless Chicken! Served with your 2 favourite Gami flavours as a coating OR dipping sauce

Flavours:
Original | Sweet Chilli | Soy Garlic | Spicy 🌶️
Drizzled:
Sweet Mustard | Red Spicy Mayo 🌶️ | White Spicy Mayo 🌶️



Whole Chicken 40.0
9494KJ
A whole chicken cut into 17 pieces (with bones) served with your 2 favourite Gami flavours as a coating OR dipping sauce

APPETIZERS

TO START

- 👑 **Gami Prawn Mandu 14.5 1600KJ**
Premium hand-made mandu (5 pcs) filled with real chunky prawn meats wrapped up in crusty thin skin
 - Gami Japchae Mandu 12.5 1820KJ** 🌿
Premium hand-made mandu (4pcs) filled with stir-fried vegetables and sweet potato noodles seasoned with sweet soy sauce, wrapped up in crispy skin and drizzled with chef's sweet and spicy sauce.
 - ★ **Gami Cheese Sticks 12.5 2175KJ** 🌿
Deep-fried mozzarella cheese sticks (6 pcs) covered with herbed bread crumbs served with sweet chilli sauce
 - Garden Salad 9.5 840KJ** 🌿
Fresh garden salad, apple, tomato and beetroot with choice of dressing
- Choose your dressing:**
Apple | Balsamic Dressing

FOR ONE

★ BONELESS CHICKEN

*Choose one flavour, coated or served on the side
LARGE 29.0 5320KJ **REGULAR 21.0 3720KJ**

GAMI WINGS

*Choose one flavour, coated or served on the side
16pcs 25.0 6660KJ **10pcs 17.0 4160KJ**

ADD-ON +

Pickled Radish 3.0 289KJ | Coleslaw 4.0 1020KJ | Green Salad 4.0 224KJ
EXTRA DIPPING SAUCE 2.5
Sweet Chilli 224KJ | Soy Garlic 506KJ | Spicy 419KJ 🌶️ | Sweet Mustard 917KJ
White Spicy Mayo 1186KJ 🌶️ | Red Spicy Mayo 979KJ 🌶️



Choose your favourite flavour:
- Original
- Sweet Chilli
- Soy Garlic
- Spicy 🌶️
- Sweet Mustard (Drizzled)

BURGERS

*All burgers served with Gami chips on the side.

- ★ **Katsu Burger 21.0 6666KJ**
Crumbed chicken double stacked outlet layered with coleslaw, Gami katsu sauce and cheese sauce on a toasted bun
- Plant-based Burger 20.0 4040KJ** 🌿
Pre-marinated soy bean meat coated in Gami batter and layered with lettuce, spanish onion, mayonnaise and Gami katsu sauce on a toasted bun
- ★ **Gami Chicken Burger 19.5 6888KJ**
Wholly crisped chicken thigh fillet layered with coleslaw and Gami cheese sauce on a toasted bun
- Pan-Cooked Chicken Burger 19.5 4440KJ** 🌶️
Juicy chicken is cooked to perfection in a pan, then layered with fresh lettuce, tomato and Spanish onion with a spicy mayo sauce on a toasted bun.



Katsu Burger



Gami Chicken Burger



Pan-Cooked Chicken Burger

GAMI DELIGHTS

Chicken Katsu 17.5 4780KJ

Crumbed chicken cutlet served with Gami katsu sauce, chips and green salad with apple dressing

★ Potato Heaven 16.5 6825KJ

Signature potato dish with layers of creamy mashed potato, mozzarella cheese, and wedges, topped with sweet chilli sauce, tomato sauce and sour cream

Seafood Pancake 16.0 2972KJ

Crispy pan-fried pancake with assorted seafood and spring onion in savoury Korean batter served with chilli soy sauce

👑 Kimchi Pancake 16.0 2541KJ

Crispy pan-fried pancake with kimchi in savoury Korean batter served with chilli soy sauce

★ Tteok bokki 14.5 3354KJ

Add mozzarella cheese on top +2.0

Stir-fried rice cakes, fish cakes, mixed vegetables and noodles in Korean gourmet chilli sauce

Kimchi Fried Rice 13.5 3053KJ

Topped with fried egg +2.0

Stir-fried rice with diced chicken thigh fillet, kimchi, mixed vegetables in chef's special spicy sauce, served with green salad

Spicy Chicken Fried Rice 13.5 3883KJ

Topped with fried egg +2.0

Stir-fried rice with diced chicken thigh fillets, mixed vegetables in chef's special spicy sauce, served with green salad

Dumplings 13.5 2190KJ

Deep fried Korean dumplings (10 pcs) filled with mixed vegetables served with coleslaw and chilli soy sauce

★ Corn Cheese 11.0 2884KJ

Baked creamy sweet corn kernels covered with melted mozzarella cheese

Gami Chips 6.9 3042KJ

Locally grown cut potato strips coated in Gami signature batter

Steamed Rice 2.5 1270KJ



SOUTH MELBOURNE SPECIALS

Chicken Parma 19.9 6567KJ

Crumbed chicken cutlet baked with napoli sauce, topped with mozzarella and parmesan cheese and served with green salad and side of chips

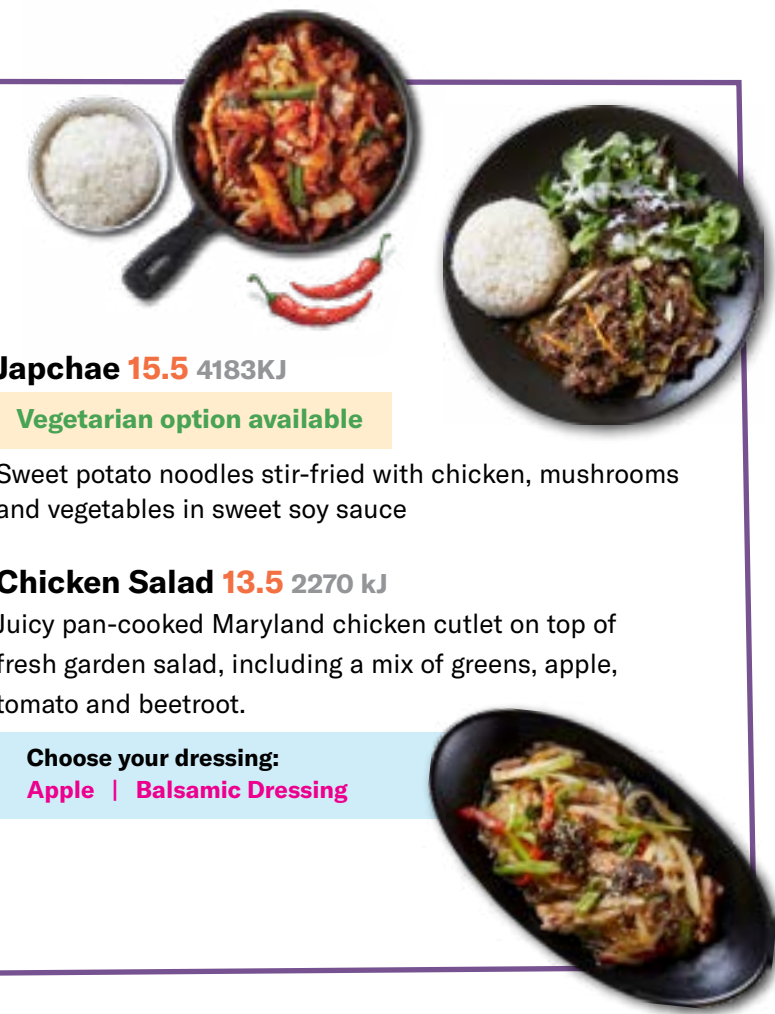
Spicy Stir Fry Chicken 18.0 5348KJ

Add mozzarella cheese on top +2.0

Stir-fried chicken fillets and vegetables in chef's special spicy sauce served on a sizzling plate with a side of steamed rice

👑 Beef Bulgogi 17.5 4440KJ

Stir-fried marinated thinly sliced beef and vegetables with sweet potato noodles in sweet soy sauce, served with rice and green salad



★ Japchae 15.5 4183KJ

Vegetarian option available

Sweet potato noodles stir-fried with chicken, mushrooms and vegetables in sweet soy sauce

Chicken Salad 13.5 2270 kJ

Juicy pan-cooked Maryland chicken cutlet on top of fresh garden salad, including a mix of greens, apple, tomato and beetroot.

Choose your dressing:

Apple | Balsamic Dressing

KID'S MENU

Chicken Slider 9.8 2060KJ

Crispy chicken thigh fillet with tomato sauce and mayonnaise on a toasted slider bun with small chips

Chicken Nuggets 9.8 2971KJ

Chicken nuggets (5 pcs) served with small chips and PopTop juice



GAMI DESSERTS TO FINISH

★ Hotteok 8.5 2742KJ

Korean street style sweets. Glutinous pancake filled with creamy melted black sugar and various nuts, sprinkled with crushed peanuts

👑 Gami K-Donut 7.9 1122KJ

Glutinous donuts filled with sweet red bean paste drizzled with caramel syrup and condensed milk, sprinkled with crushed peanuts

